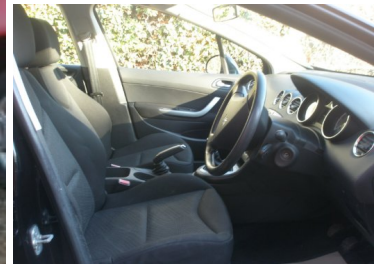


2011(60) Peugeot 308 S 5-Door

SOLD



Engine: Petrol
Body: Hatchback
Gearbox: 5-Speed
Capacity: 1397cc
Colour: Black
Mileage: 75,000
CO²: 149g/km
MPG: 43.5mpg
Top Speed: 113mph
BHP: 98bhp
Insurance Grp: 11E

Martin Leigh AutoMobiles
 Unit 6 William Road
 Guildford
 Surrey, GU1 4QZ

PART SERVICE HISTORY
 AIR CONDITIONING
 POWER STEERING
 ABS
 MULTIPLE AIRBAGS
 REMOTE CENTRAL LOCKING
 ELECTRIC MIRRORS
 ELECTRIC FRONT WINDOWS
 REAR ELECTRIC WINDOWS
 RADIO/CD
 PEARLESCENT PAINT
 FRESH MOT
 SERVICE HISTORY
 PRE DELIVERY SERVICE
 VERY CLEAN CONDITION

A VERY CLEAN AND TIDY 5 DOOR HATCHBACK. BEING THE 1.4 IT BENEFITS FROM BEING ECONOMICAL TO RUN AND IS IN A LOW INSURANCE GROUP. PRIOR TO YOUR COLLECTION THE CAR WILL BE INSPECTED AND SERVICED AS NECESSARY IN OUR OWN WORKSHOP, IT WILL THEN BE TREATED TO A FRESH INDEPENDENT MOT. YOU WILL NOT BE DISAPPOINTED!